



**WPG Holdings Ltd.  
(3702.TT/3702.TW)  
2Q22 Earning Release**

August 16<sup>th</sup>., 2022

# Safe Harbor Notice



- **These forward-looking statements, which may include statements regarding WPG' future results of operations, financial condition or business prospects, are subject to significant risks and uncertainties and are based on WPG' current expectations.**
- **Actual results may differ materially from those expressed or implied in these forward-looking statements for a variety of reasons, including, among other things: the cyclical nature of our industry; our dependence on introducing new products on a timely basis; our dependence on growth in the demand for our products; our ability to compete effectively; our ability to successfully expand our capacity; our dependence on key personnel; general economic and political conditions, including those related to the IC industry; possible disruptions in commercial activities caused by natural and human-induced disasters, including terrorist activity and armed conflict; and fluctuations in foreign currency exchange rates.**
- **Our release of financial forecasts and forward-looking statements at any particular time does not create any duty of disclosure beyond that which is imposed by law, and we expressly disclaim any obligation to publicly update or revise any forecasts or forward-looking statements, whether as a result of new information, future events or otherwise.**

# Agenda



■ **Welcome**

■ **2Q22 Financial Highlights & 3Q22 Outlook**    **Cliff Yuan**

■ **Q&A**    **Scott Lin/  
Cliff Yuan**



# Statements of Comprehensive Income



Unit: NT\$ million

Item	2Q22	1Q22	QoQ(%)	2Q21	YoY(%)	1H22	1H21	YoY(%)
Revenue	199,056	209,865	(5.2)	200,226	(0.6)	408,921	377,341	8.4
COGS	(191,325)	(201,770)	(5.2)	(192,197)	(0.5)	(393,095)	(362,740)	8.4
Gross Profit	7,730	8,096	(4.5)	8,029	(3.7)	15,826	14,601	8.4
Gross Margin	3.88%	3.86%		4.01%		3.87%	3.87%	
Operating Expenses	(3,955)	(3,875)	2.1	(4,388)	(9.9)	(7,830)	(7,973)	(1.8)
Operating Income	3,775	4,220	(10.5)	3,642	3.7	7,996	6,628	20.6
Operating Margin	1.90%	2.01%		1.82%		1.96%	1.76%	
Net Non-operating Items	(179)	(48)	274.9	342	NM	(227)	336	NM
Net Financing costs	(899)	(634)	41.8	(499)	80.2	(1,532)	(934)	64.1
FX Gains/Losses	127	106	20.5	13	847.3	233	(30)	NM
Investment Income/Losses	508	436	16.5	537	(5.4)	944	931	1.3
Others	84	44	91.2	291	(71.0)	128	368	(65.2)
Profit Before Tax	3,596	4,173	(13.8)	3,984	(9.7)	7,769	6,964	11.5
Tax	(694)	(687)	1.1	(745)	(6.7)	(1,382)	(1,269)	8.9
Minority	(5)	(41)		(52)		(46)	(89)	
Profit After Tax	2,897	3,444	(15.9)	3,188	(9.1)	6,341	5,607	13.1
Net Margin	1.46%	1.64%		1.59%		1.55%	1.49%	
EPS (NT\$) <sub>(1)</sub>	1.49	2.05		1.66		3.54	3.10	
Tax %	19%	16%		19%		18%	18%	
(1).Weighted average common shares outstanding	1,679	1,679		1,679		1,679	1,679	

# Balance Sheet



Unit: NT\$million

item	2Q22		1Q22		2Q21	
	Amount	%	Amount	%	Amount	%
Cash & Marketable Securities	12,645	4	14,885	5	11,977	4
Accounts Receivable - Trade	146,126	43	150,304	46	150,288	51
Inventory	118,872	35	99,474	31	77,685	26
Current Assets	296,001	88	280,262	87	253,568	86
Others	40,989	12	43,359	13	40,664	14
<b>Total Assets</b>	<b>336,990</b>	<b>100</b>	<b>323,620</b>	<b>100</b>	<b>294,232</b>	<b>100</b>
Current Interest-bearing Debt	104,420	31	100,625	31	96,503	33
Accounts Payable	89,198	26	84,955	26	83,245	28
Accrued Liabilities and Others	23,663	7	17,006	5	20,361	7
Current Liabilities	217,282	64	202,587	63	200,109	68
Long-term Interest-bearing Debt	41,102	12	40,165	12	24,490	8
Others	2,762	1	2,749	1	3,158	1
<b>Total Liabilities</b>	<b>261,146</b>	<b>77</b>	<b>245,501</b>	<b>76</b>	<b>227,757</b>	<b>77</b>
<b>Total Equity</b>	<b>75,844</b>	<b>23</b>	<b>78,120</b>	<b>24</b>	<b>66,475</b>	<b>23</b>

## KEY Indices<sup>(1)</sup>

Net Working Capital (NT\$million)	175,800	164,822	144,728
AR Turnover (Days)	68	62	65
Inventory Turnover (Days)	52	42	36
AP Turnover (Days)	42	36	39
Average Collection Periods (Days)	78	68	61
Current Ratio	136%	138%	127%
Gearing	1.74	1.60	1.63

(1).Annualized

# Cash Flows

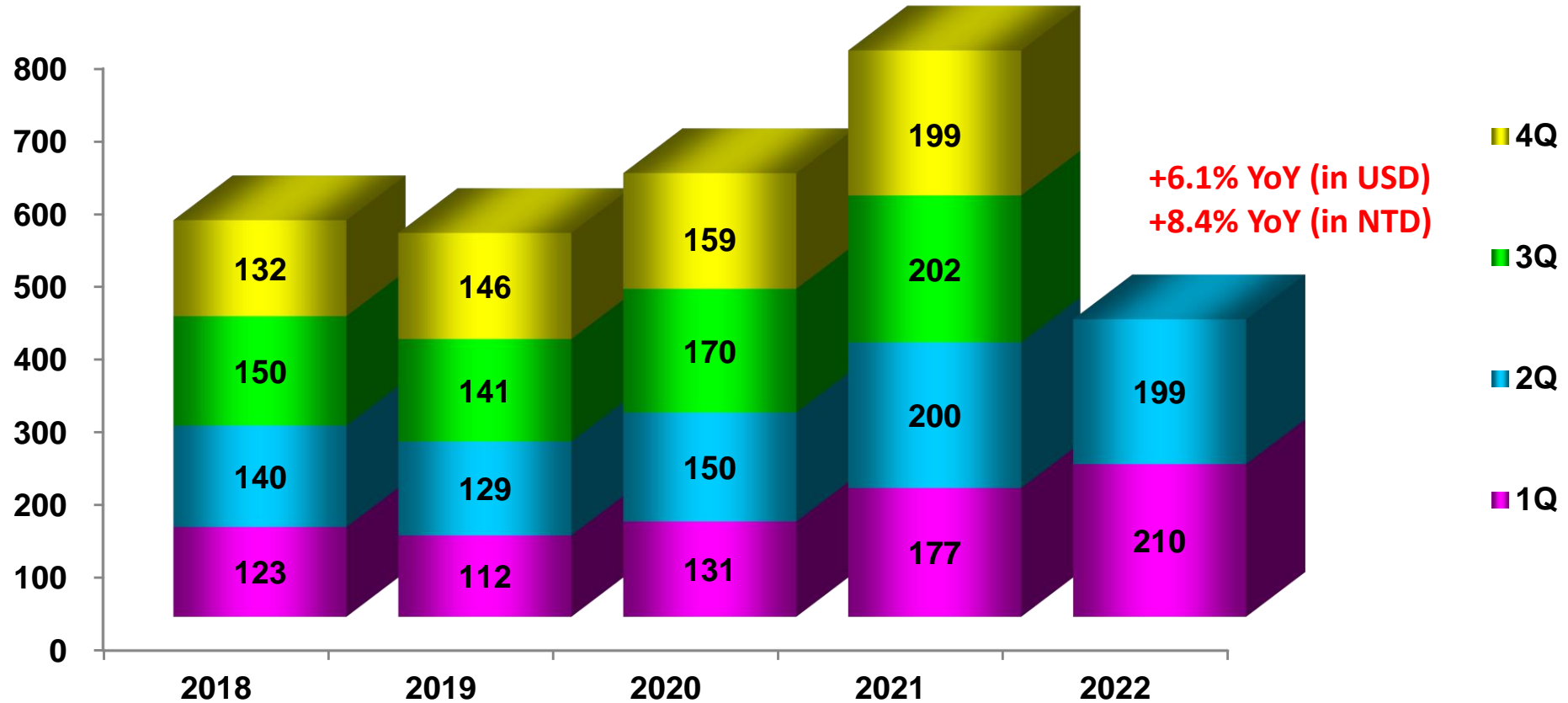


Unit:NT\$million	2Q22	1Q22	2Q21	1H22	1H21
-Income before Income Tax	3,596	4,173	3,984	7,769	6,964
-Changes of NWC	(11,094)	(20,127)	(19,426)	(31,221)	(39,337)
-Adjustment & Others	(2,010)	(4,250)	2,526	(6,260)	3,047
<b>From Operation</b>	<b>(9,508)</b>	<b>(20,204)</b>	<b>(12,916)</b>	<b>(29,712)</b>	<b>(29,325)</b>
-Other Financial Instruments	(218)	(221)	458	(440)	1,453
-Capital Expenditure	(152)	(231)	177	(383)	(106)
-Marketable Financial Instruments	(3)	(836)	(100)	(838)	(189)
-Others	(26)	(105)	(1,196)	(131)	(1,188)
<b>From Investment</b>	<b>(399)</b>	<b>(1,393)</b>	<b>(660)</b>	<b>(1,792)</b>	<b>(31)</b>
-Financial Debt	4,732	19,413	13,515	24,145	31,948
-Others	(99)	(212)	302	(311)	304
<b>From Financing</b>	<b>4,633</b>	<b>19,201</b>	<b>13,818</b>	<b>23,835</b>	<b>32,252</b>
<b>Cumulative translation adjustments</b>	<b>3,025</b>	<b>2,868</b>	<b>(2,194)</b>	<b>5,893</b>	<b>(2,018)</b>
<b>Net Cash Position Change</b>	<b>(2,249)</b>	<b>473</b>	<b>(1,953)</b>	<b>(1,777)</b>	<b>878</b>
<b>Ending Cash Balance</b>	<b>12,631</b>	<b>14,881</b>	<b>11,898</b>	<b>12,631</b>	<b>11,898</b>

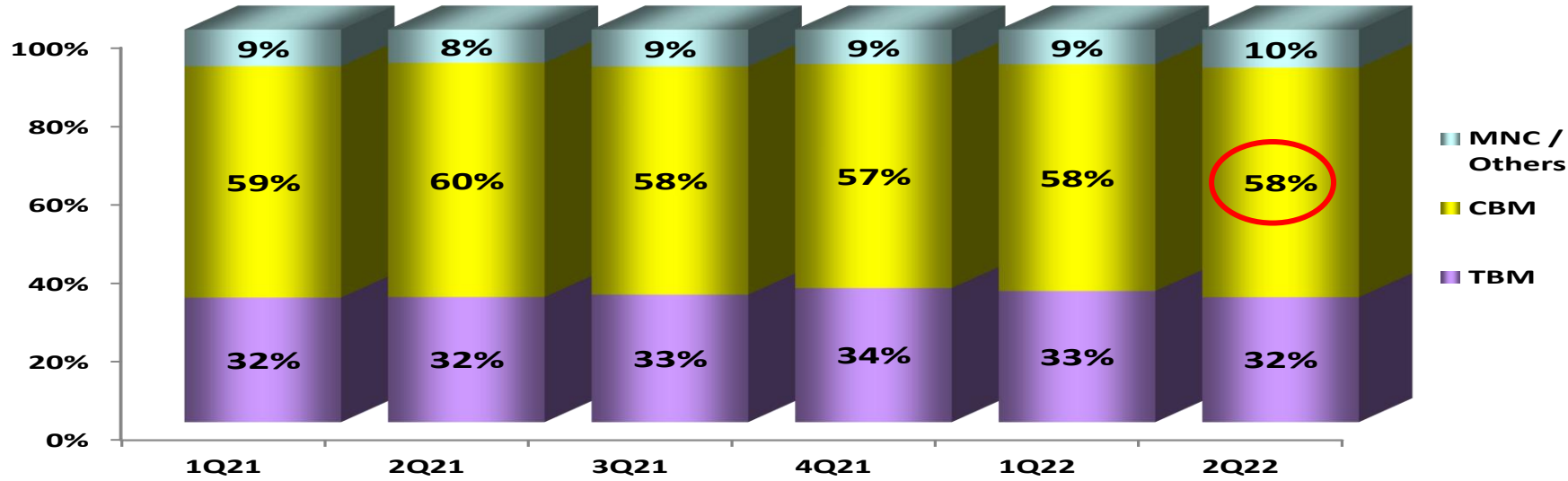
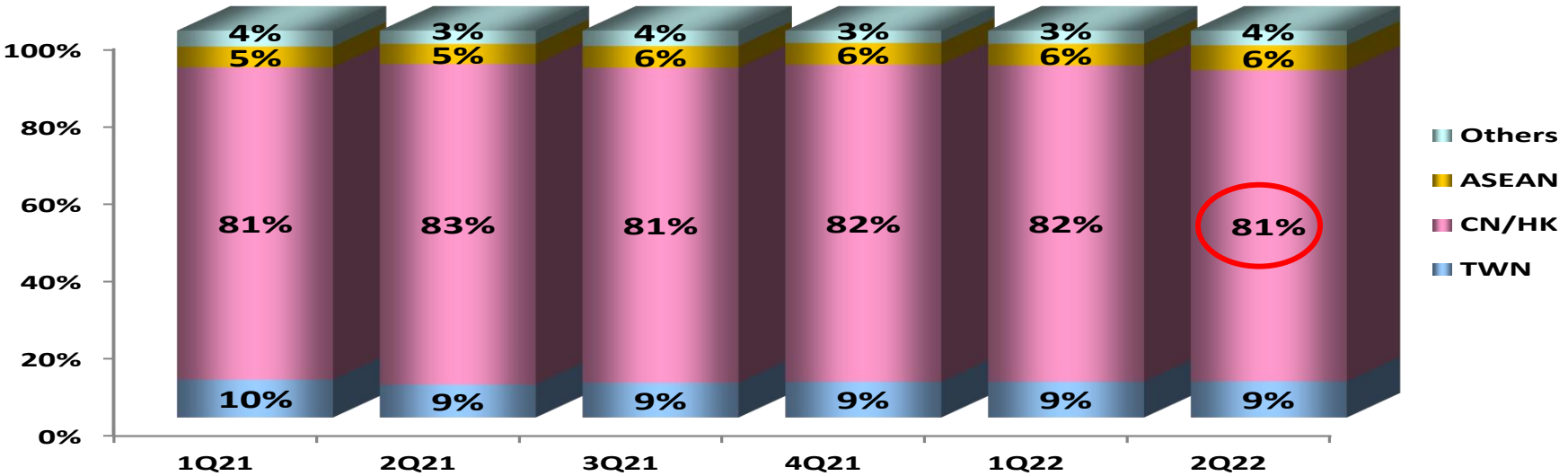
# Consolidated Revenue



Unit: NT\$billion

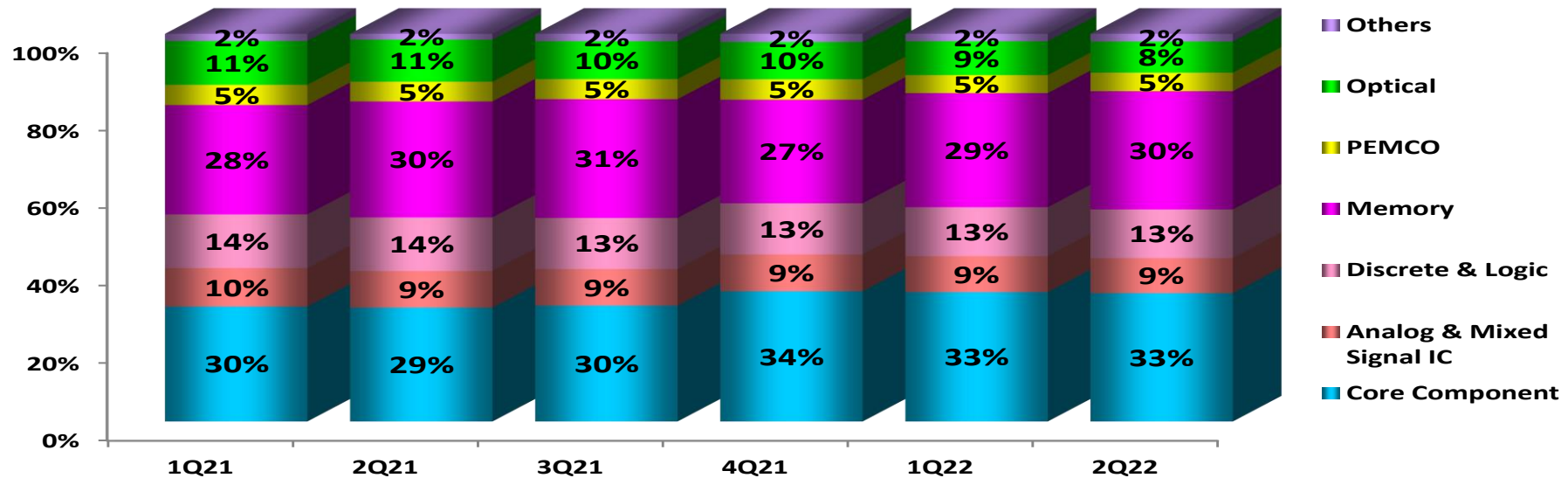
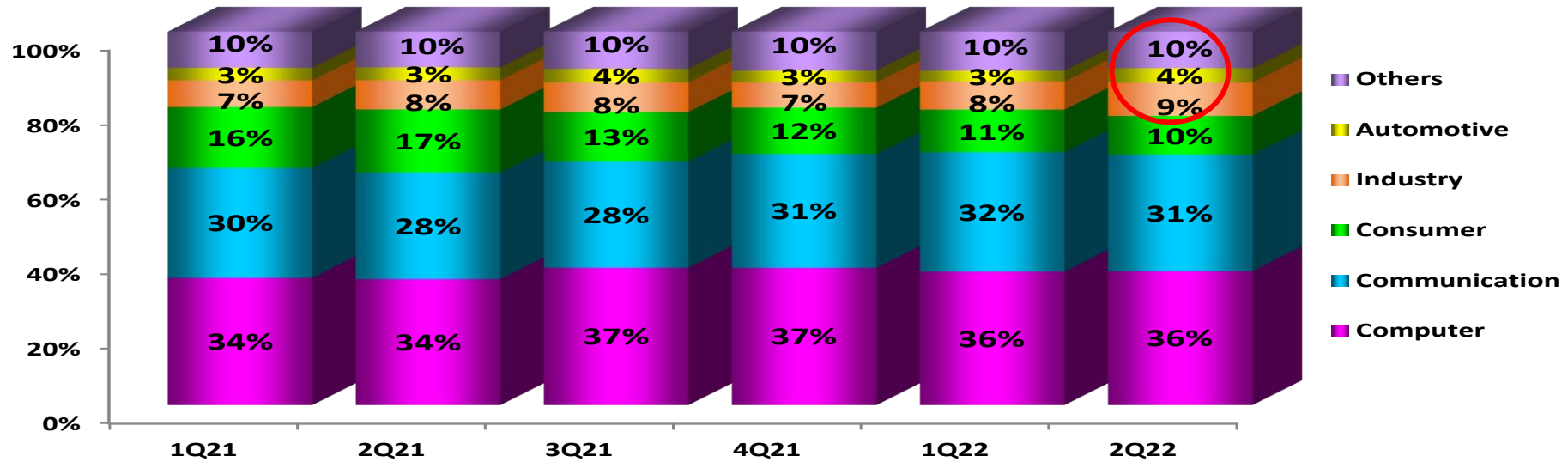


# Sales breakdown by Geography/ Customer



TBM : Taiwan-Based Customers  
 CBM : China Based Customers

# Sales breakdown by Application/ Device Type

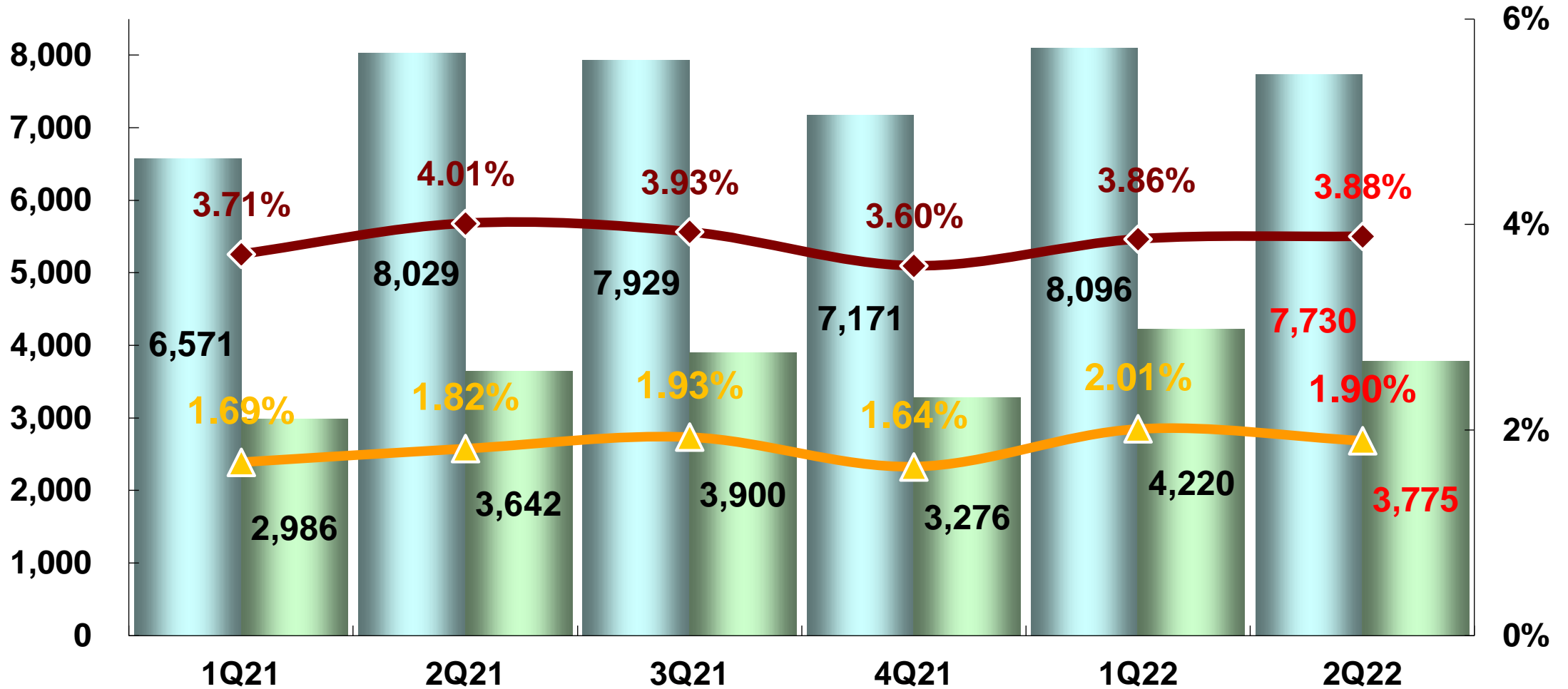


# Gross Margin vs. Operating Margin

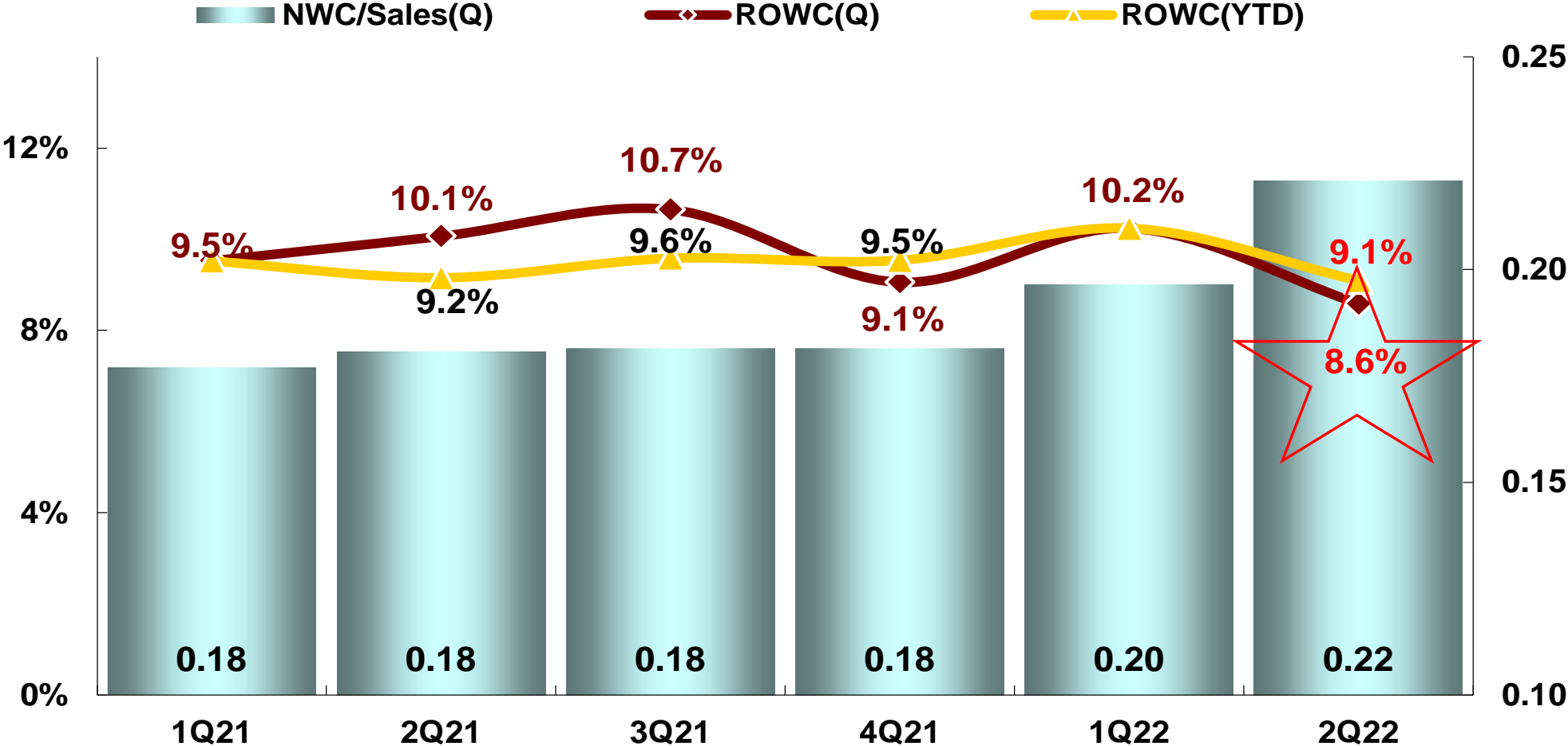


■ Gross Profit   ■ Operating Income   ◆ Gross Margin   ▲ Operating Margin

NT\$million

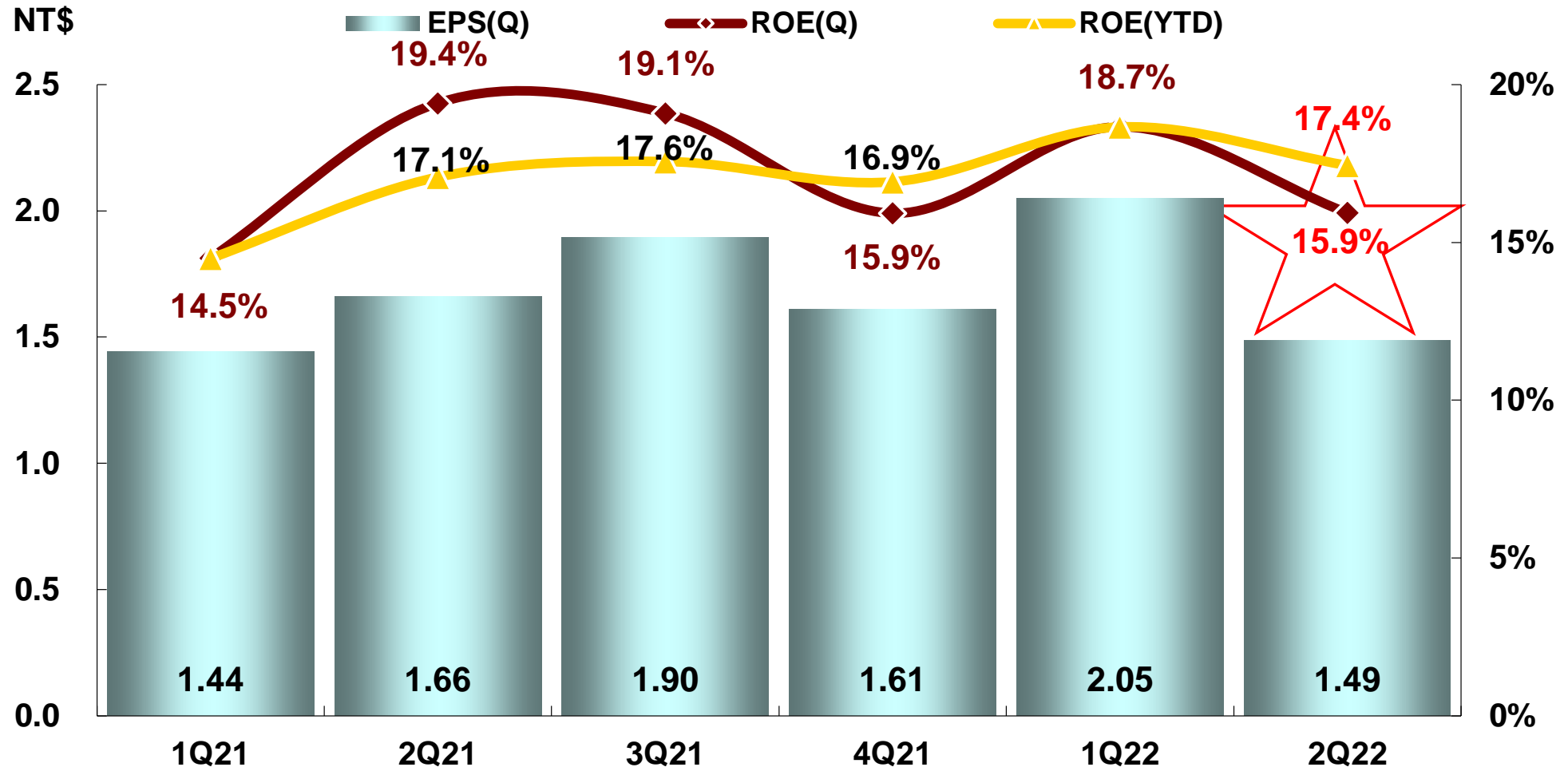


# ROWC vs. NWC/Sales



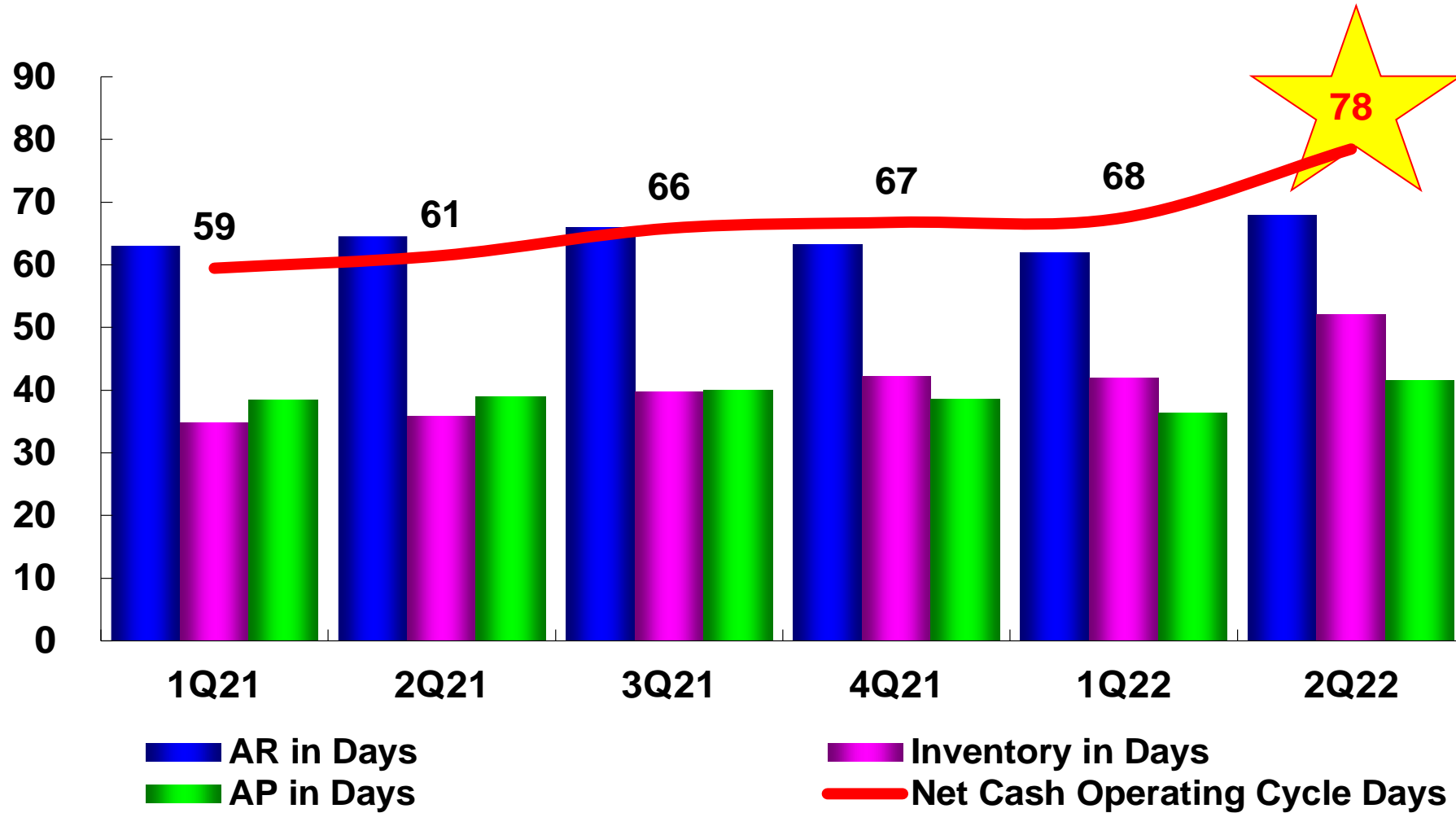
Note : Annualized

# ROE vs. EPS



Note : Annualized

# Operating Cash Cycle



Note : Annualized

# 3Q22 Summary Forecast



Based on our current business outlook, management expects :

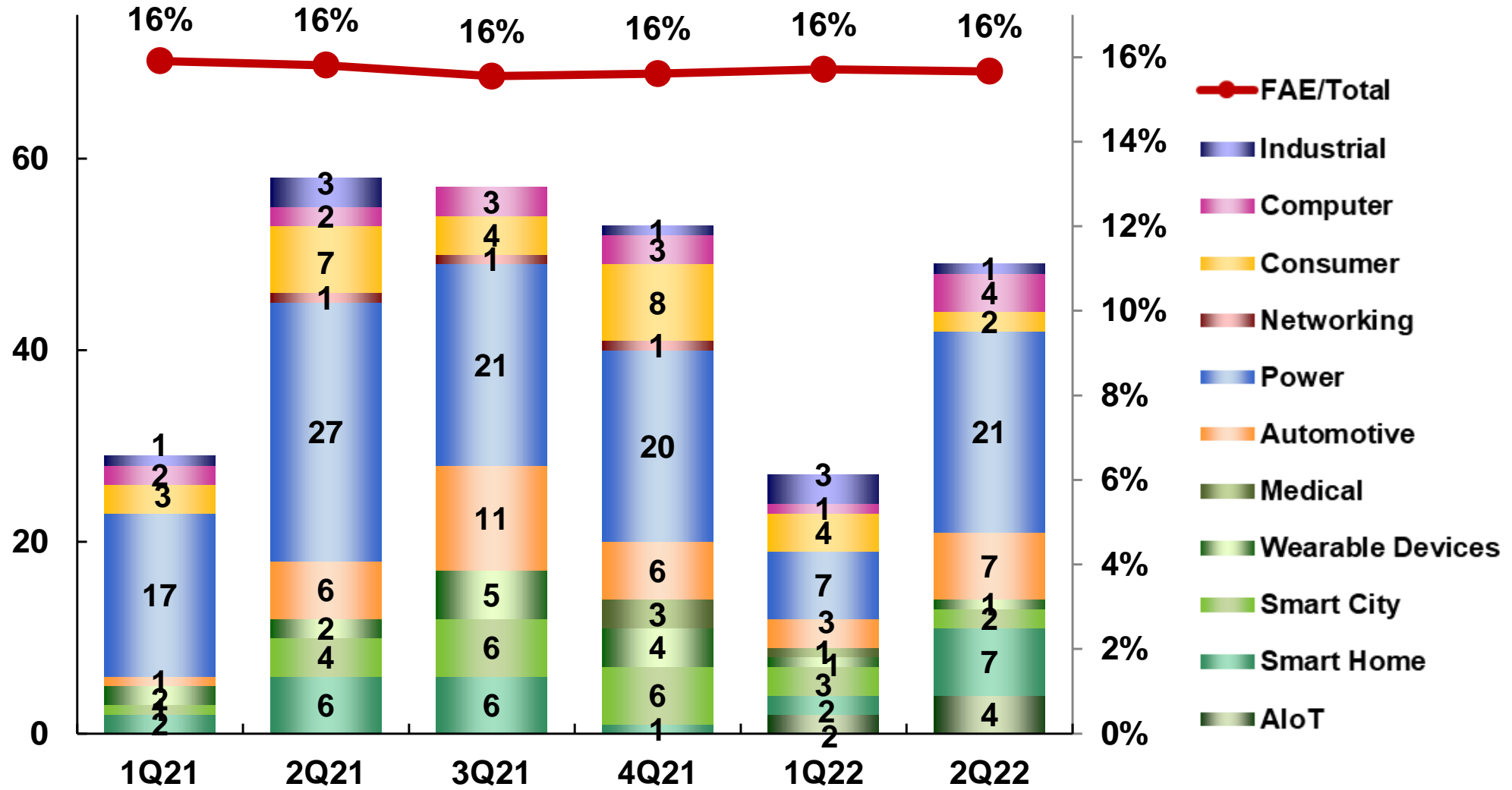
Unit:NT\$million

Item	3Q22 Forecast <sup>(2)</sup>	2Q22 <sup>(1)</sup>
Revenue	<b>180,000 ~ 190,000</b>	<b>199,056</b>
Gross Profit	6,660 ~ 7,410	7,730
Gross Margin	<b>3.70% ~ 3.90%</b>	<b>3.88%</b>
Operating Expenses	3,510 ~ 3,705	3,955
Operating Income	3,150 ~ 3,705	3,775
Operating Margin	<b>1.75% ~ 1.95%</b>	<b>1.90%</b>
Profit Before Tax	2,657 ~ 3,140	3,596
Profit After Tax	2,261 ~ 2,647	2,897
EPS (NT\$)	1.35 ~ 1.58	1.49

(1). Reviewed

(2). At a forecast FX rate of 29.8 NT dollars to 1 US dollar averaged over 3Q22.

# More Solutions Launched



# 49 Solutions Launched in 2Q22

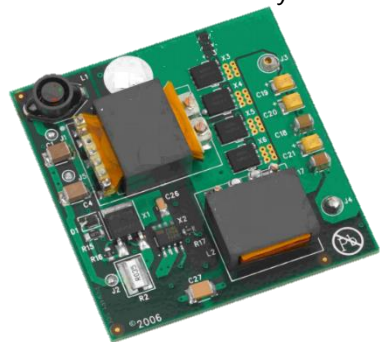


## 消費電源

- ▶ 可有效控制旋轉式冰箱壓縮機驅動器方案 2022-06-23
- ▶ LED TV方案 2022-06-06
- ▶ 65W高效能數位智能充電器方案 2022-06-01
- ▶ 100W PD控制方案 2022-05-27
- ▶ 25W隔離型智能變頻冰箱電源方案 2022-05-23
- ▶ All-in-one 360W高效電源設計方案 2022-05-16
- ▶ Type-C 65W PD快充方案 2022-05-10
- ▶ BLDC電機驅動方案 2022-04-27
- ▶ 第三代功率半導體快充PD電源 2022-04-19
- ▶ 100W PD電源方案 2022-04-06

## 工業電源

- ▶ 500W峰值功率印表機電源供應器方案 2022-06-21
- ▶ 100W DC-DC 電源方案 2022-06-10
- ▶ PFC圖騰柱控制器搭配GaN的500W方案 2022-05-30
- ▶ 1KW 60V~100V 直流無刷BLDC馬達驅動器 2022-05-04
- ▶ 4KW/650V工業馬達驅動器整合方案 2022-04-22
- ▶ 60W高效率standby電源解決方案 2022-04-15



100W DC-DC Power Solution



250W Refrigerator and Air Conditioner Compressor Solution

## 照明電源

- ▶ 高效超薄200W LED驅動電源方案 2022-06-13
- ▶ 可調光75W LED驅動器解決方案 2022-05-13

## 汽車電源

- ▶ 多協議USB Type C車載快充方案 2022-06-20
- ▶ 60W快速充電站之輔助電源方案 2022-05-19
- ▶ 車充電源方案 2022-04-13

## 電腦及周邊

- ▶ DP2.0轉HDMI2.1之擴展塢方案 2022-05-18
- ▶ 電競平台人機介面顯示方案 2022-05-17
- ▶ 走入虛擬世界·電競搖桿帶你成為遊戲主宰 2022-05-07
- ▶ 8K Report Rate 電競鼠標方案 2022-04-25

## 消費類

- ▶ 250W冰箱及冷氣壓縮機方案 2022-06-27
- ▶ 高效冰箱壓縮機方案 2022-06-09



75W Dimmable LED Driver Solution



eSports Controller Solution

# 49 Solutions Launched in 2Q22



## 車身電子

- ▶ VCU 整車控制器演示 2022-06-21
- ▶ EPS轉向助力系統方案 2022-06-07
- ▶ 汽車儀錶盤方案 2022-05-12
- ▶ 汽車電動尾門方案 2022-05-11
- ▶ 新能源車水泵方案 2022-04-08

## 車身安全

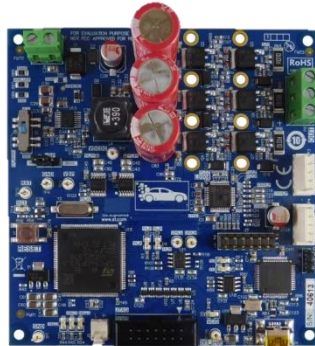
- ▶ 柵極驅動器：搞定各種汽車電機控制 2022-06-29
- ▶ 新能源汽車熱管理系統方案 2022-04-20

## 工業類

- ▶ 應用於各類工業產品以及汽車產品的 Arduino 平台方案 2022-04-08

## 穿戴裝置

- ▶ 低延遲、高續航力藍芽音頻SoC 2022-06-30



Automotive Gate Driver Solution



Car Electric Tailgate Solution

## 智能家居

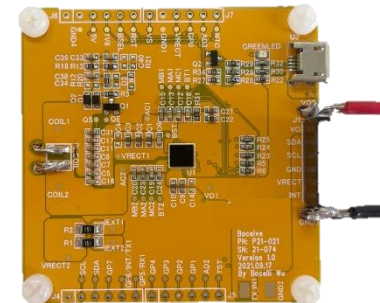
- ▶ 四合一的空氣淨化器控制解決方案 2022-06-28
- ▶ 50W Max 無線充電接收端方案 2022-06-24
- ▶ 會議音箱通話回聲消除設計 2022-06-17
- ▶ Wi-Fi 6 智慧物聯網語音辨識方案 2022-05-20
- ▶ Wi-Fi6 AI 智能門鎖方案 2022-05-06
- ▶ FEM整套解決方案 2022-04-28
- ▶ WiFi智能燈泡方案 2022-04-11

## 智慧城市

- ▶ Helium系統所架構之GPS追蹤器 2022-05-26
- ▶ 智能USB攝像頭應用方案 2022-05-09

## AIoT

- ▶ AI BOX 2022-06-15
- ▶ AIoT之人臉偵測方案 2022-06-01
- ▶ OpenHarmony摺疊開發板 2022-05-24
- ▶ 監控與AIoT產品方案 2022-04-18



50W Max Wireless Charging Receiver Solution



Surveillance & AIoT Product Solution



<http://www.WPGholdings.com>  
IR@WPGholdings.com