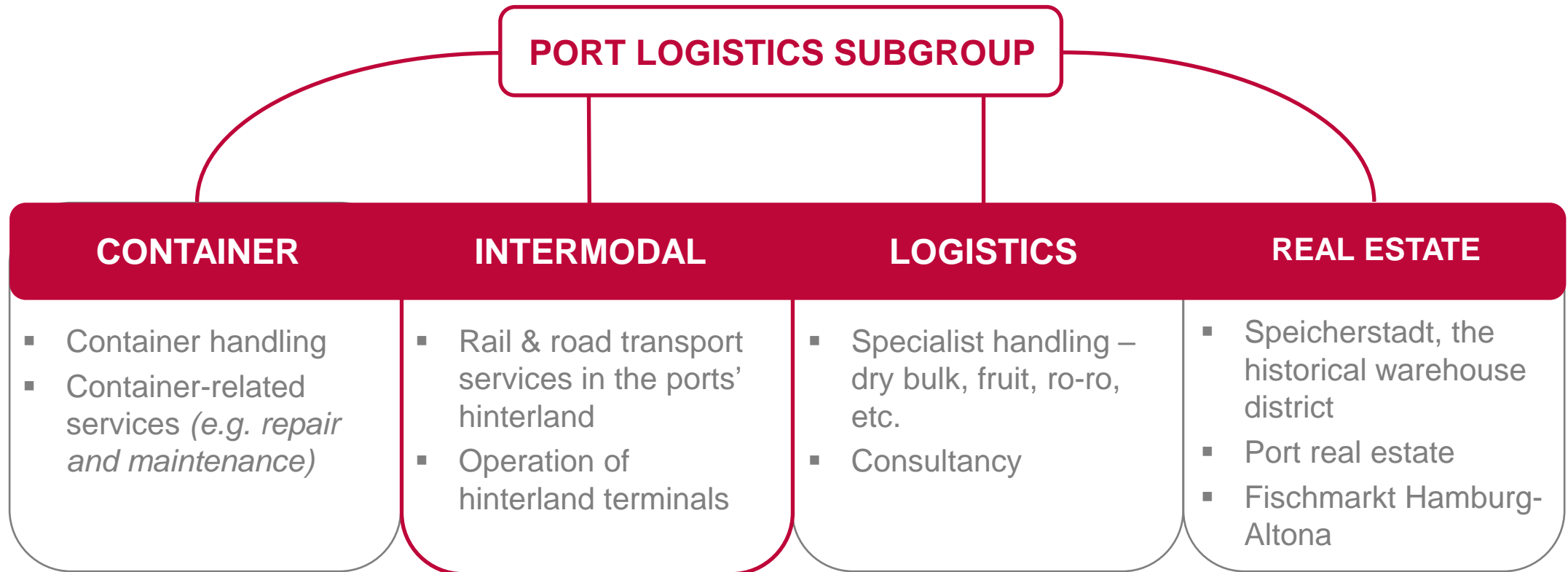


# THE INTERMODAL BUSINESS OF METRANS

*THE GLOBAL  
INTERMODAL  
SOLUTION*





# METRANS Group

2019 Figures

## General information:

founded 1991, 100% HHLA

## Revenue:

over 450 000 000 EUR

## Intermodal:

over 1 200 000 TEU

## Depots:

over 1 075 000 TEU

## Employees:

2 186 (December 2019)



# Profile of the METRANS Group

Terminals, Locomotives, Wagons and Repair Shops

## 5 HUB terminals & depots

Czech Republic, Slovakia, Poland & Hungary

## 12 inland terminals & depots

Czech Republic, Slovakia, Poland, Austria & Germany

## NEW TERMINAL 2020 # 17 GERNSHEIM

Over 2 million sqm on Depot & Terminal capacities

Almost 80 locomotives

Almost 3 000 wagons

## 2 repair shops for locomotives & wagons

Kolin & Dunajska Streda

## Offices in the ports

of Hamburg, Bremerhaven & Koper

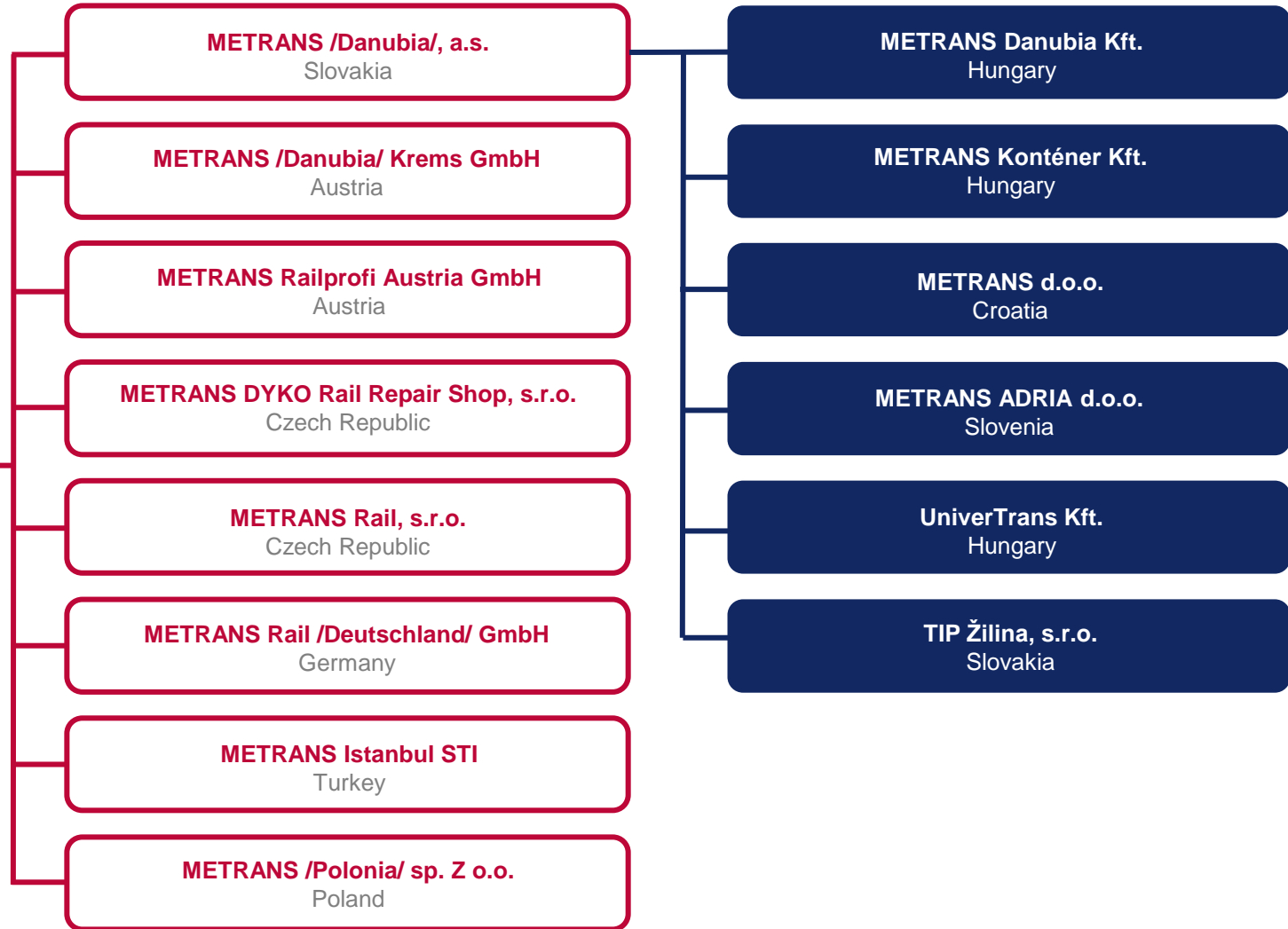


# METRANS Group

Established in 1991, sites in 9 countries, more than 2000 employees

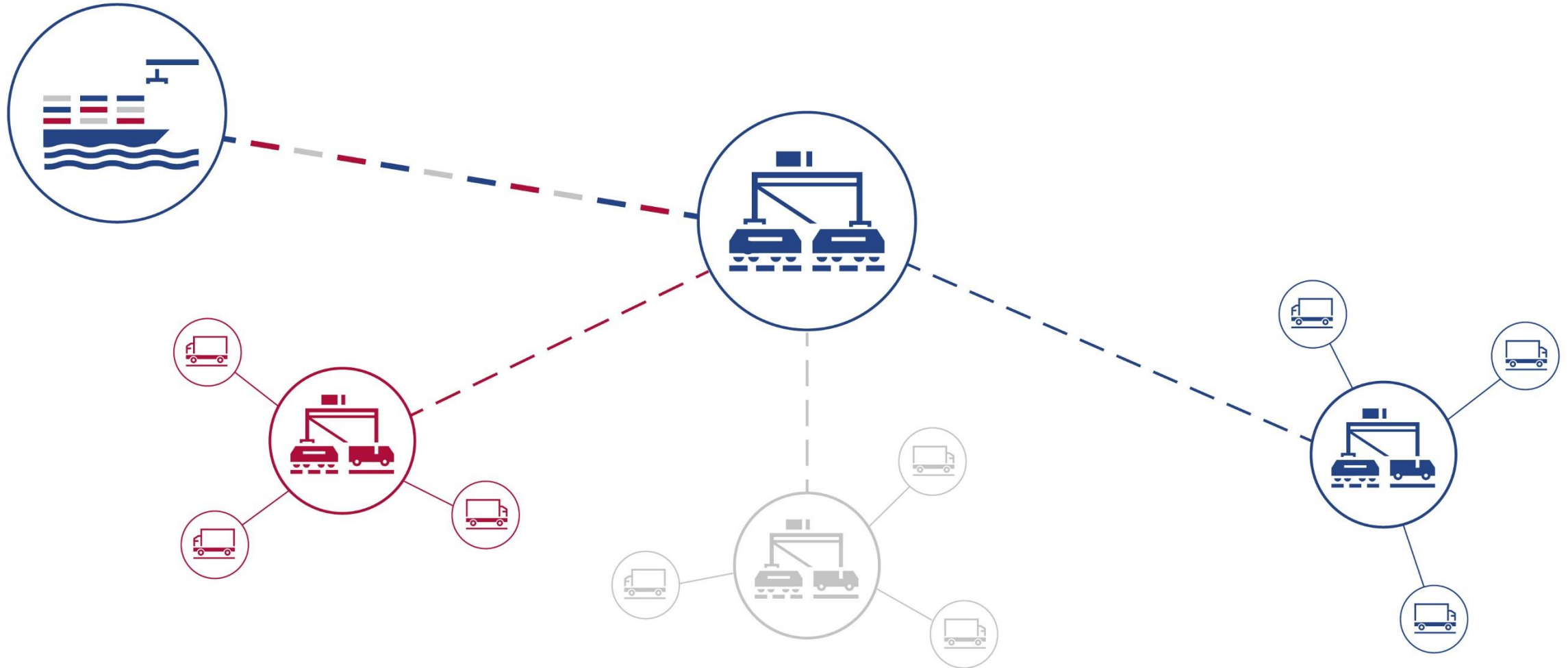


**METRANS, a.s.**  
Prague, Czech Republic



# The HUB & SHUTTLE System

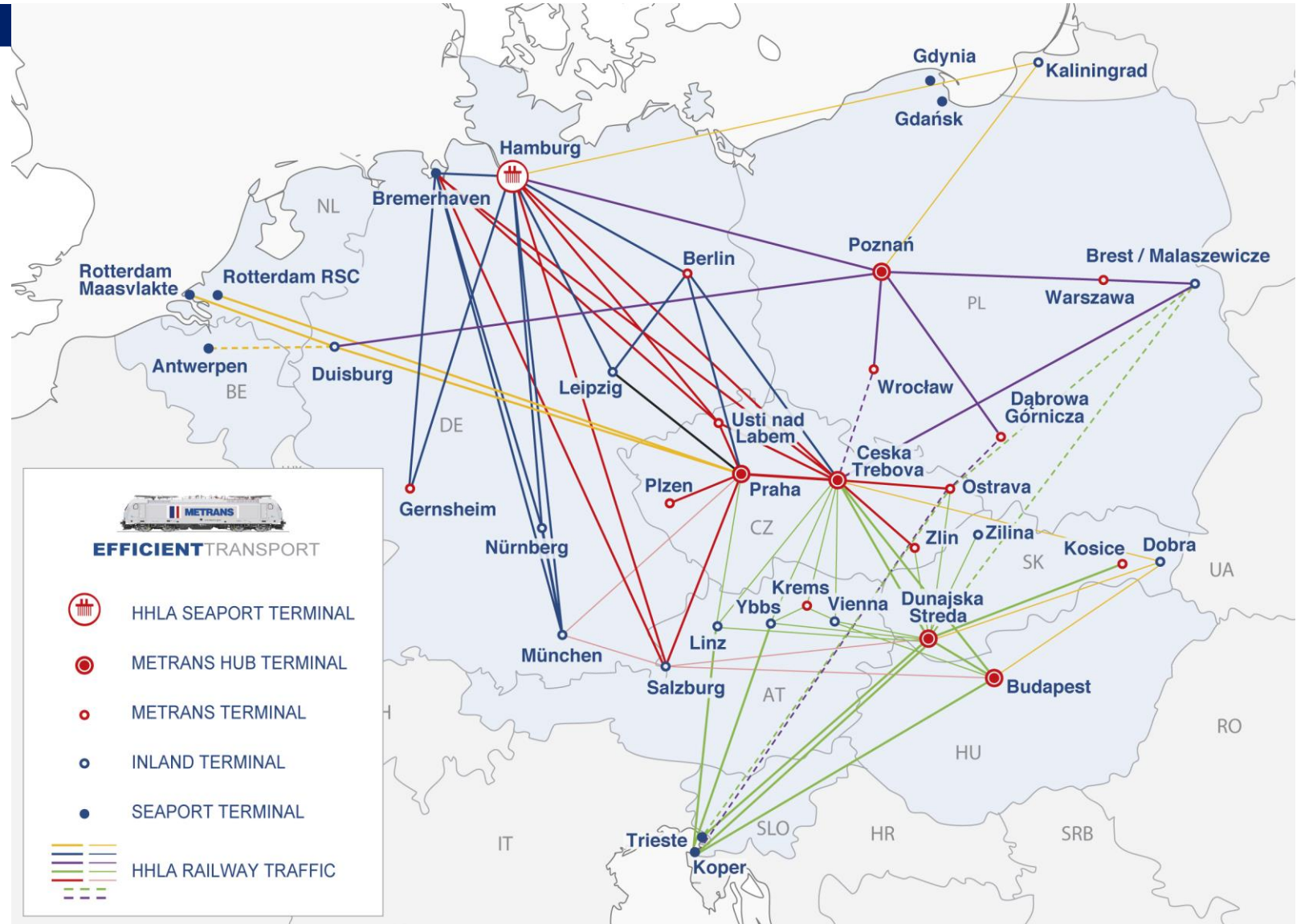
The Ports are linked with a Network of HUB and Inland Terminals



# METRANS

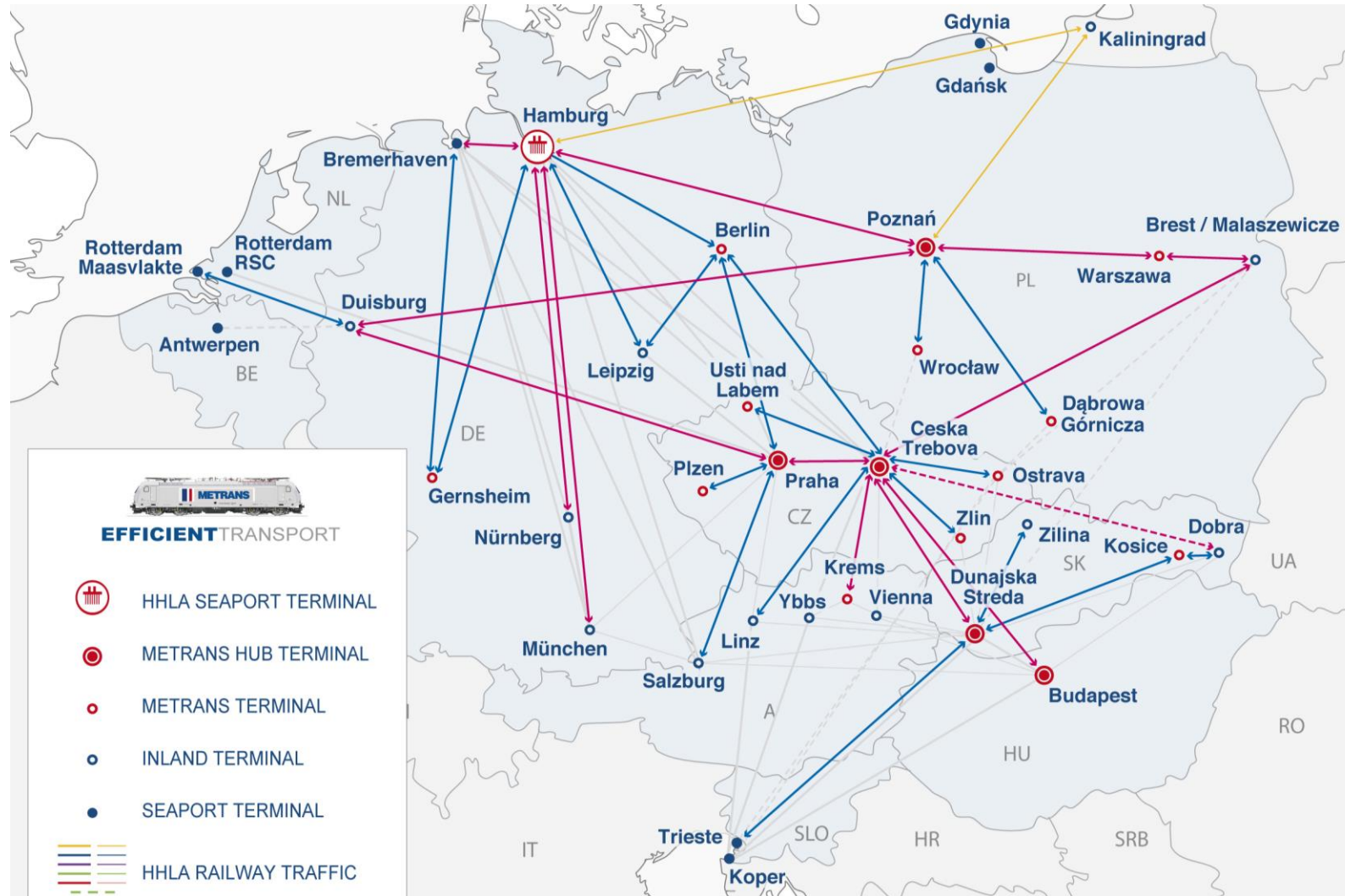
Over 550 regular train connections per week

From/To			Trains per Week
Hamburg	↔	Praha	54
Hamburg	↔	Ceska Trebova	32
Hamburg	↔	Dunajska Streda	14
Bremerhaven	↔	Praha	13
Bremerhaven	↔	Ceska Trebova	12
Bremerhaven	↔	Dunajska Streda	6
Rotterdam	↔	Praha	10
Duisburg	↔	Praha	6
Koper	↔	Dunajska Streda	35
Koper	↔	Budapest	28
Praha	↔	Ceska Trebova	28
Praha	↔	Salzburg	10
Praha	↔	Leipzig	1
Ceska Trebova	↔	Dunajska Streda	28
Ceska Trebova	↔	Kosice	4
Ceska Trebova	↔	Zlin	14
Ceska Trebova	↔	Ostrava	12
Ceska Trebova	↔	Krems	4
Ceska Trebova	↔	Linz	6
Dunajska Streda	↔	Kosice	12
Dunajska Streda	↔	Budapest	13
Dunajska Streda	↔	Krems	2
Hamburg	↔	Nürnberg	16
Hamburg	↔	München	16
Hamburg	↔	Leipzig	14
Bremerhaven	↔	Nürnberg	8
Bremerhaven	↔	München	8
Nürnberg	↔	München	8
Hamburg	↔	Berlin	10
Hamburg	↔	Gernsheim	6



# New Silk Road

## METRANS Connections linked to the New Silk Road



### Malaszewicze / Brest to:

- Warszawa
- Poznan
- Hamburg
- Duisburg
- München / Nürnberg via Hamburg
- Ceska Trebova with daily connection to all METRANS terminals as shown

### Dobra / Chop to:

- Budapest
- Dunajska Streda
- Ceska Trebova
- Hamburg
- Poznan
- Kaliningrad

# HUB Terminals

## PRAHA

(since 1991)



- Size: 420,000 m<sup>2</sup>
- Storage capacity: 15,000 TEU full + 10,000 TEU empty
- 7 sidings of 600 m, 2 sidings of 550 m, 6 sidings of 350 m
- 6 portal cranes, 3 reach stackers (45 t), 8 reach stackers (10/12 t)
- 4 shunters
- 10 trains can be handled at the same time
- Repair facility for containers
- On-site customs office
- Operates 24/7/365

## DUNAJSKA STREDA

(since 1999)



- Size: 280,000 m<sup>2</sup>
- Storage capacity: 25,000 TEU full + 15,000 TEU empty
- 5 sidings of 650 m, 4 sidings of 550 m
- 3 portal cranes, 6 reach stackers (45 t), 9 reach stackers (12 t)
- 9 trains can be handled at the same time
- Repair facility for containers
- On-site customs office
- Operates 24/7/365

## CESKA TREBOVA

(since 2013)



- Size: 138,000 m<sup>2</sup>
- Storage capacity: 4,500 TEU full + 4,200 TEU empty
- 6 sidings of 740 m
- 3 portal cranes, 3 reach stackers (12 t)
- 6 trains can be handled at the same time
- On-site customs office
- Repair facility for containers
- Operates 24/7/365

# HUB Terminals

## BUDAPEST

(since 2017)



- Size: 143,500 m<sup>2</sup>
- Storage capacity: 12,500 TEU full + 7,500 TEU empty
- 6 sidings of 650 m, 2 sidings of 500 m
- 3 portal cranes, 9 reach stackers, 3 empty container stackers
- 6 trains can be handled at the same time
- Repair facility for containers
- On-site customs office
- Operates 24/7/365

## POZNAN (Gadki)

(since 2011)



- Size: 134,000 m<sup>2</sup>
- 1 siding of 750 m, 3 sidings of 630 m
- 6 reach stackers with lifting capacity up to 45 tons
- 2 trains can be handled at the same time
- On-site customs office
- Handling of swap bodies and semi-trailers
- Operates 24/7/365

to come...

# END Terminals

## ZLIN

(since 1994)



- Size: 68,600 m<sup>2</sup>
- Storage capacity: 1,300 TEU full + 1,200 TEU empty
- 3 sidings of 550 m, 1 siding of 400 m, 2 sidings of 350 m, 2 sidings of 300 m
- 4 reach stackers (45 t), 4 reach stackers (12 t)
- On-site customs office
- Repair facility for containers
- Operates 24/7/365

## PLZEN

(since 2007)



- Size: 50,000 m<sup>2</sup>
- Storage capacity: 1,300 TEU full + 1,200 TEU empty
- 3 sidings of 400 m
- 2 portal cranes, 2 reach stackers (10/12 t)
- On-site customs office
- Repair facility for containers
- Operates 24/7/365

## KOSICE

(since 2010)



- Size: 46,500 m<sup>2</sup>
- Storage capacity: 3,000 TEU full + 3,000 TEU empty
- 2 sidings of 550 m
- 3 reach stackers (45 t), 2 reach stackers (12 t)
- On-site customs office
- Repair facility for containers
- Operates 24/7/365

# END Terminals

## OSTRAVA

(since 2011)



- Size: 40,000 m<sup>2</sup> plus 60,000 m<sup>2</sup> depot
- Storage capacity: 1,200 TEU full + 5,000 TEU empty
- 2 sidings of 250 m
- 1 portal crane, 4 reach stackers (45 t), 3 reach stackers (12 t)
- On-site customs office
- Repair facility for containers
- Operates 24/7/365

## KREMS AN DER DONAU

(since 2012)



- Size: 40,000 m<sup>2</sup>
- Storage capacity: 1,500 TEU full + 2,000 TEU empty
- 4 sidings of 680 m
- 3 reach stackers (45 t), 2 reach stackers (12t)
- On-site customs office
- Repair facility for containers

## USTI NAD LABEM

(since 2015)



- Size: 25,500 m<sup>2</sup>
- Storage capacity: 1,500 TEU full + 2,000 TEU empty
- 1 siding of 185 m, 2 sidings of 160 m
- 1 portal crane, 3 reach stackers (45 t), 2 reach stackers (12 t)
- On-site customs office
- Repair facility for containers
- Operates 24/7/365

# END Terminals

## WARSAWA (Pruszkow)

(since 1993)



- Size: 57,000 m<sup>2</sup>
- 2 sidings of 600 m, 1 siding of 350 m
- 3 reach stackers with lifting capacity up to 45 tons
- Handling of swap bodies and semi-trailers
- On-site customs office

## DABROWA GORNICZA

(since 2010)



- Size: 170,000 m<sup>2</sup>
- 2 sidings of 625 m, 1 siding of 600 m, 1 siding of 500 m
- 3 reach stackers with lifting capacity up to 45 tons, 1 reach stackers with lifting capacity up to 12 tons
- Reefer plugs – PTI incl. small repairs
- Handling of swap bodies
- On-site customs office

## WROCLAW (Katy Wroclawskie)

(since 2015)



- Size: 65,000 m<sup>2</sup>
- 2 sidings of 600 m
- 1 gantry crane, 5 reach stackers (45 t)
- Reefer plugs – PTI incl. small repairs
- Handling of swap bodies and semi-trailers
- On-site customs office

# END Terminals

## ZILINA

(Operated by TIP ZILINA)



- Concession since 2019
- Size: 150,000 m<sup>2</sup>
- 2 sidings of 750 m
- 2 portal cranes, 2 reach stackers (12 t)
- Repair facility for containers
- Handling of swap bodies and semi-trailers

## BERLIN KOWU

(since 2019)



- Size: 20,000 m<sup>2</sup>
- 1 siding of 800 m, 3 sidings of 500 m
- 1 portal crane, 1 reach stackers (40 t)
- Reefer plugs – PTI incl. small repairs
- Depot for empty containers–capacity: 2,000 TEU
- On-site customs office

## GERNSHEIM

(01.09.2020)



- Size: 54,000 m<sup>2</sup>
- 2 sidings of 340 m
- 1 gantry crane, 1 slewing jib crane, 2 reach stackers (45 t)
- Truck capacity: 30 trucks (long term sub-contractors)

# METRANS Rail Repair Shops

## Dyko Rail Repair Shop (Kolin, Czech Republic)



- Established in 1940
- Acquired by METRANS in 2007
- Licensed to repair Siemens and Bombardier locomotives
- Repairs:
  - container wagons
  - running gear for passenger carriages
  - locomotives and wheelsets

## Rail & Reach stacker Repair Shop (Dunajska Streda, Slovak Republic)



- Established in 2019
- Repairs:
  - container wagons
  - locomotives
  - reach stackers

# HHLA Pure CO<sub>2</sub>-neutral container handling & transport

With the HHLA Pure product METRANS offers our clients a **CO<sub>2</sub>-free handling and also transport**, and thus, together we make a real contribution towards **climate protection**.

## HHLA and METRANS course of action

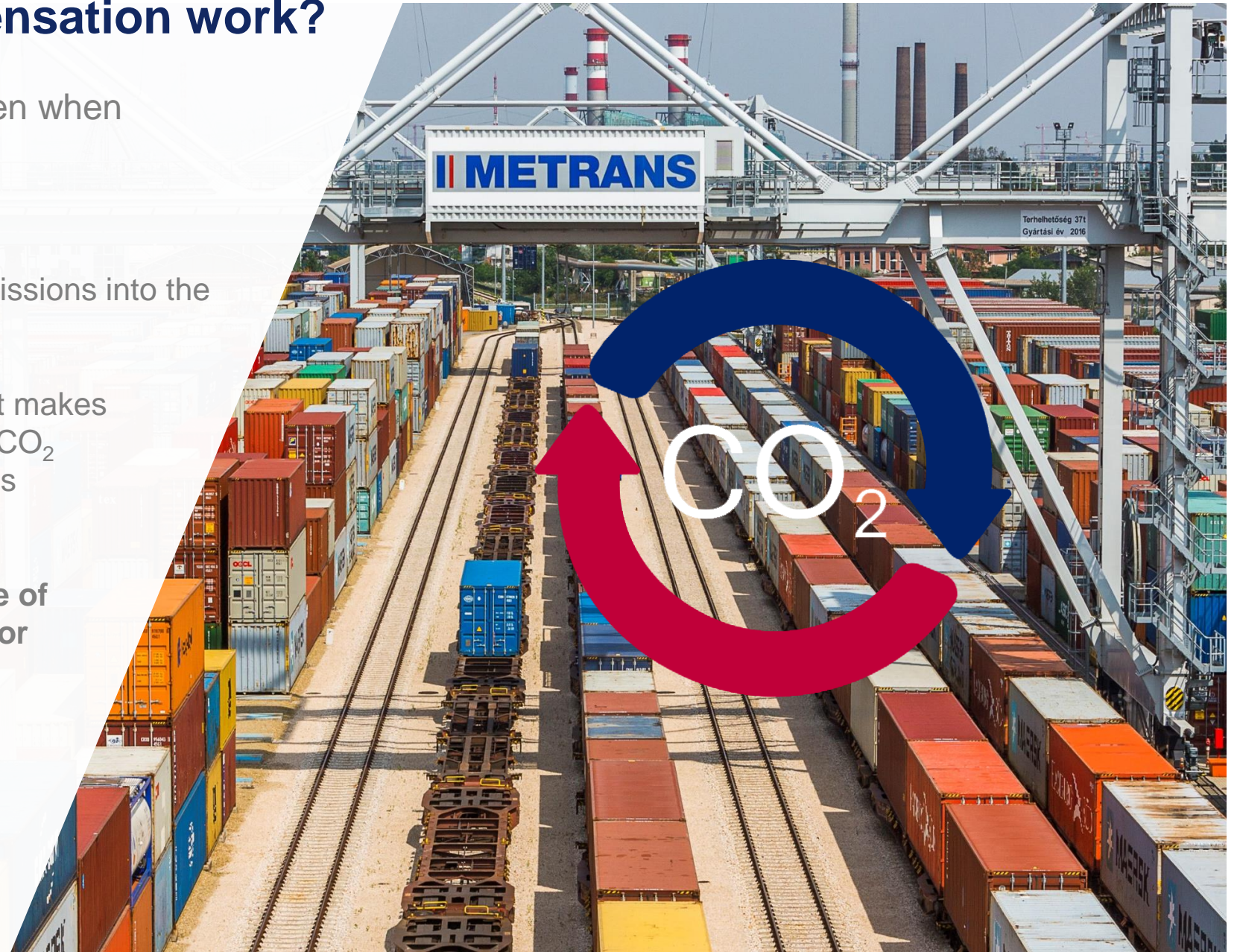
- Modern hybrid and electric locomotives
- Electrification at the port container terminal with electric storage crane system and electric vehicles



# How does the CO<sub>2</sub> compensation work?

Compensation is still worthwhile, even when large distances are involved

- Burning fossil fuels releases CO<sub>2</sub> emissions into the atmosphere
- As the atmosphere has no borders, it makes no difference where in the world the CO<sub>2</sub> emissions are produced; the impact is the same the world over
- **THE SOLUTIONS** – with the course of action we solve CO<sub>2</sub> emissions – for remaining emission we buy **Certificates for environmental projects.**



# Our Product: Green Handling & Green Transport

Certified CO<sub>2</sub> neutrality for transportation from the port all the way to Europe's hinterland

- Handling at the HHLA container terminal with widely electrified processes
- Transport and collection via METRANS with CO<sub>2</sub> optimized trains and wagons
- Any currently unavoidable CO<sub>2</sub> emissions are offset through certified development projects to the highest international standard (Gold)
- **Process:**
  - Certification of HHLA Pure TÜV Nord
  - Receiving customer-specific transport (volume/route)
  - Offsetting and monitoring by TÜV Nord
- Confirmation of climate-neutral transport for customers





**Thank you for your attention!**