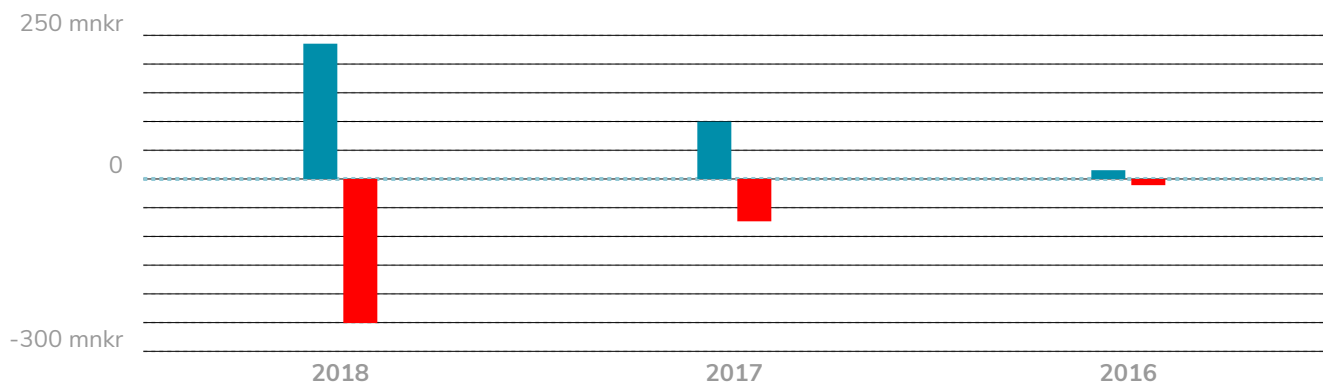




Every company +

Overview **KRY International AB**

Org.nr: 556967-0820

 [Monitor companies](#)**Company overview****Key figures****More financial statements & key figures****Group key figures 2018-12 (SEK thousand)**

Revenue:	235 454
Res. e. fine:	-250 681
Profit for the year:	-250 681
Total assets:	542 576

[Download the annual report](#)



## Overview

Tax: Registered [read more](#)

VAT: Registered in the VAT register

Registration: 2014

[Show the board](#)

### Contact details

Phone: [08300048](#)

visiting address: [TORSGATAN 21](#)

place: 113 21 Stockholm

County: Stockholm County

[View all addresses](#)

Updated: 2020-05-19

### PROFIT MARGIN

**-107.00%**

-73.47% (2017)

### QUICK RATIO

**714.62%**

775.92% (2017)

### SOLIDITY

**86.45%**

87.50% (2017)

### GROSS PROFIT MARGIN

**100.00%**



Every company +

Overview 

SAFE BUSINESS BUSINESS



## Credit

Credit assessment with UC's unique Risk Class

risk Forecast

Recommended credit limit

Name, address and telephone number

# SEK 159

excl. VAT[Buy](#)[All our credit information](#)

UNIQUE OF ALL COMPANIES



## Registration Certificate

The name of the company

Business, address

F-tax and VAT registration

Share capital, mortgages

# SEK 49

excl. VAT[Buy](#)[More registration certificates](#)

UP TO 12 YEARS OF HISTORY





Every company +

**Overview**

Watermarked with all-company logo

**Free** With allabolag.se account

Buy

**Buy without watermark****ALLIANCE PLUS**

With Allabolag Plus, you have access to company events, estimated company value and monitoring of up to 25 companies. Each month you also receive the following products:

- ✓ 10 Credit Information Base
- ✓ 1 st Registration certificate
- ✓ 1 st Annual report without watermark

**Subscription****SEK 89** excluding VAT / month

Get the plus

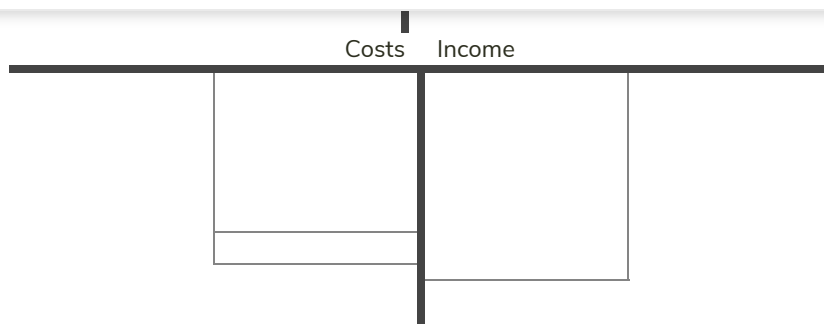
[Read more about Allabolag Plus](#)**Consolidated**

bisgraf.

Assets Equity &amp; debt



Every company +

Overview 

## Unlock Bisgraf & get better visibility with Allabag PLUS

In collaboration with Bonanza, there are more detailed graphs on most organizations' pages.

Get the plus

[Sign in](#)



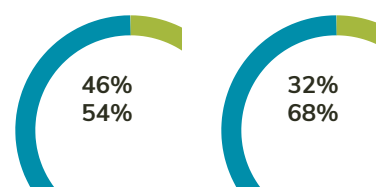
### Income statement (SEK thousand)

◀ 2018-12 2017-12 ▶

Net sales	234 227	99 686
Other sales	1 227	60
Operating profit (EBIT)	-255 800	-73 242
Profit / loss after net financial items	-250 681	-73 731
Profit for the year	-250 681	-73 731

Overview 

Unsubscribed capital subscribed	0	0
Fixed assets	17 016	5 904
Current assets	525 559	191 281
Assets	542 576	197 185
<b>LIABILITIES, SHAREHOLDERS' EQUITY AND PROVISIONS</b>		
Equity	469 032	172 533
minority interests	0	0
Provisions (SEK thousand)	0	0
Long-term liabilities	0	0
Current liabilities	73 544	24 652
Liabilities and equity	542 576	197 185

**Salaries & dividends (SEK thousand)**

◀ 2018-12    2017-12    ▶

Salaries to the Board & CEO:	2 115	1 394
Including a bonus to the Board & CEO	-	-
Salaries to other employees:	76 858	23 086
Of which earnings pay to other employees	-	-
Social expenses:	28 953	7 797

Overview **Salaries & dividends (SEK thousand)**
 **2018-12**   **2017-12**   

Dividend to shareholders	0	0
Revenue	235 454	99 746

Since 2016, companies reporting according to the K2 model do not have to disclose salary costs in the annual report, therefore this information may be missing.

**Key figures**

Number of employees :	139	51
Net sales per employee (SEK thousand) :	1 685	1 955
Personnel costs per employee (SEK thousand) :	800	608
Operating profit, EBITDA :	-253 464	-72 509
Net Change :	134.96%	586.92%
The Du Pont model :	-46.19%	-37.14%
Profit margin :	-107.00%	-73.47%
gross profit margin :	100.00%	100.00%
Working capital / sales:	192.98%	167.15%
solidity :	86.45%	87.50%
Quick ratio :	714.62%	775.92%

**What are this year's conference trends?**

Where are Swedish companies going to conference 2018 and what criteria are important when deciding content and destinations? You get the answers here.



## Overview



## Income statement (SEK thousand)

◀ 2018-12 2017-12 ▶

Nettoomsättning	33 144	13 306
Övrig omsättning	331	37
Rörelseresultat (EBIT)	-211 123	-79 474
Resultat efter finansnetto	-206 089	-79 986
Årets resultat	-215 089	-66 461

## Balansräkningar (tkr)

◀ 2018-12 2017-12 ▶

## TILLGÅNGAR

Tecknat ej inbetalt kapital	0	0
Anläggningstillgångar	99 101	10 928
Omsättningstillgångar	457 286	185 074
Tillgångar	556 387	196 003

## SKULDER, EGET KAPITAL OCH AVSÄTTNINGAR



Overview 

Obeskattade reserver	0	0
Avsättningar (tkr)	0	0
Långfristiga skulder	0	0
Kortfristiga skulder	43 141	13 810
Skulder och eget kapital	556 387	196 003



## Löner &amp; utdelning (tkr)

◀ 2018-12    2017-12    ▶

Löner till styrelse & VD:	2 115	1 394
Varav tantiem till styrelse & VD	0	0
Löner till övriga anställda:	46 887	15 892
Varav resultatlön till övriga anställda	0	0
Sociala kostnader:	19 300	5 596
Utdelning till aktieägare	0	0
Omsättning	33 475	13 343

Sedan 2016 behöver företag som redovisar enligt K2 modellen inte uppge lönekostnader i årsredovisningen, därför kan dessa uppgifter saknas.

## Nyckeltal

Antal anställda :	82	32
Nettoomsättning per anställd (tkr) :	404	416

Overview 

<b>Koreiseresultat, EBITDA :</b>	-208 959	-78 744
<b>Nettoomsättningförändring :</b>	149,09%	398,73%
<b>Du Pont-modellen :</b>	-37,03%	-40,55%
<b>Vinstmarginal :</b>	-621,64%	-597,28%
<b>Bruttovinstmarginal :</b>	100,00%	100,00%
<b>Rörelsekapital/omsättning:</b>	1 249,53%	1 287,12%
<b>Soliditet :</b>	92,25%	92,95%
<b>Kassalikviditet :</b>	1 059,98%	1 340,14%

Obs! boksluten har olika längd.

Siffrorna som visas i grafen normaliseras till 12 månader.

Bokslutet 2014 är 9 månader och har därför blivit justerat uppåt.

Laddar koncern ...

OM OSS

[Om allabolag.se](#)

[Integritetspolicy](#)

TJÄNSTER

[Gratisök](#)

[Sök Branscher och](#)

[visa Listor](#)

[Affärskoll](#)

HJÄLP

[Support](#)

[Hitta hit](#)

[Kontakta](#)

[allabolag.se](#)

FÖLJ OSS



Every company +



Overview



Användarvillkor Cookies

© allabolag.se 2020