



## Get to know SHI

Solve what's next with your complete IT partner

We know that selecting, sourcing, and managing IT is complicated. That's why our mission is to make life simpler for business, IT, and procurement professionals through our scalable and cost-effective technology services.

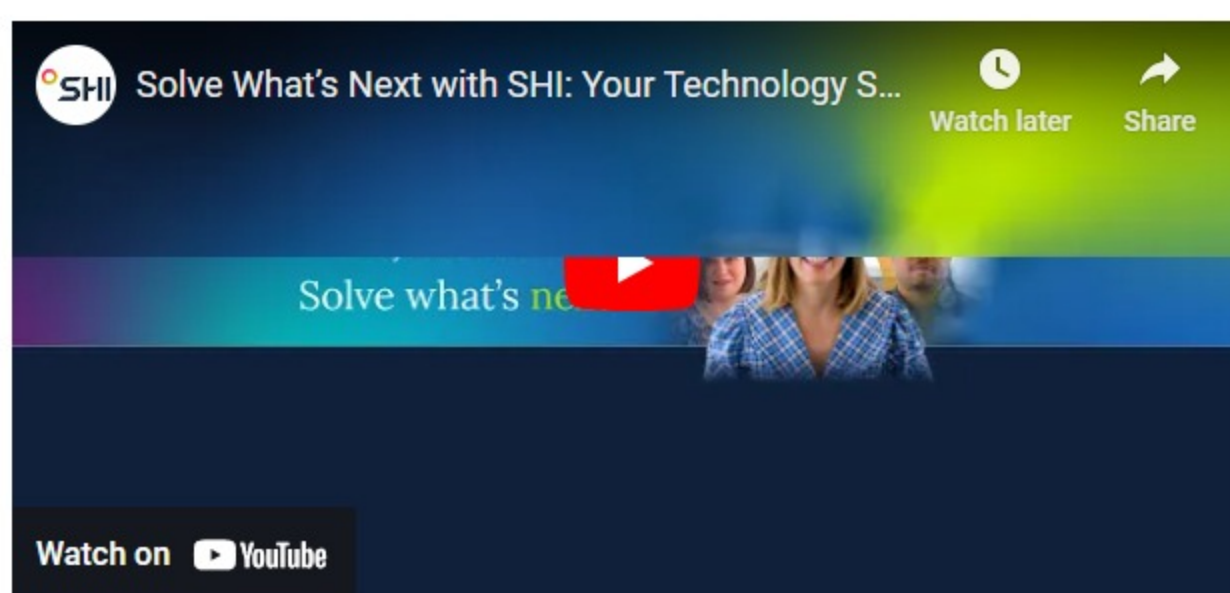
[About SHI](#)
[SHI Resource Hub](#)
[News and Media](#)
[Case Studies](#)
[Sponsorships](#)
[Events](#)
[Brand Guide](#)
[Careers](#)

Think of SHI as your personal technology concierge. We connect your team with the IT solutions and services you need to support your organizational growth, security, and employee experience.

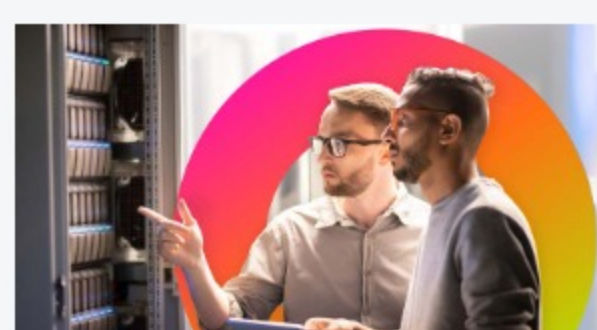
Our in-house data center integration, device configuration, and deployment and license advisory services, plus our top-tier status with vendors and flexible financing makes life simpler for IT decision makers.

Execute your IT vision with stress-free, scalable solutions you – and your people – will love.

SHI is proud to be the largest Minority/Woman Owned Business Enterprise (MWBE) in the United States.



## Friendly, knowledgeable, and well-connected – we're ready when you are



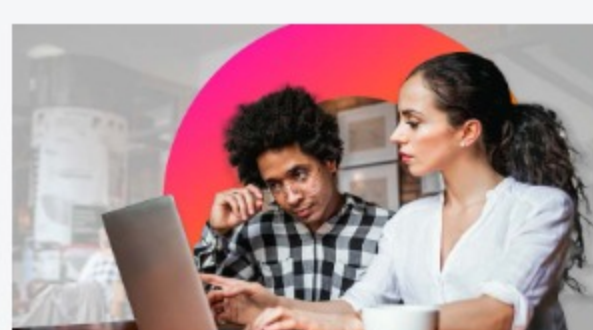
### Transform with next-generation infrastructure

Accelerate IT modernization with cloud and data center infrastructure

[Transform with SHI](#)


### Prioritize employee experience with modern workplace solutions

End-user computing solutions that drive productivity and collaboration

[Collaborate with SHI](#)


### Protect your employees, data, and infrastructure

Advanced cybersecurity solutions and managed services

[Protect with SHI](#)


### Rationalize and optimize IT investments

Simplify your spend across the full IT lifecycle

[Optimize with SHI](#)


"We don't 'target' customers, we talk to them. We understand where they are and where they need to go. Then we help them select, deploy, and manage the technology that will get them there."

## Our Co-Founder, President, and CEO: Thai Lee

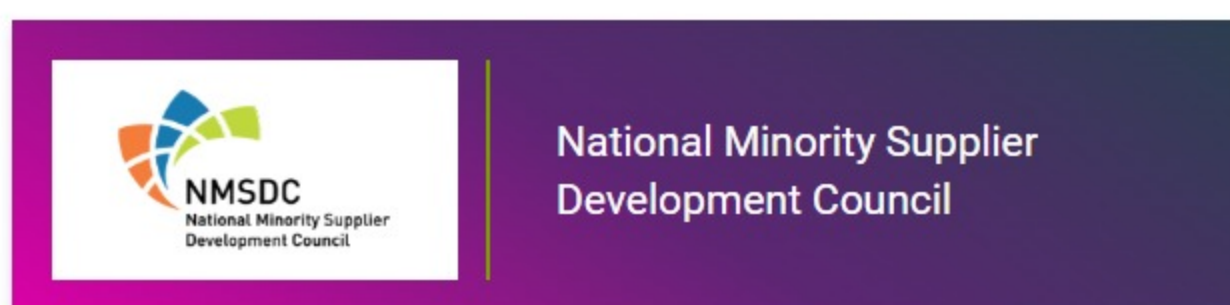
Since co-founding a regional, software-only reseller named Software House International in 1989, Thai Lee has served as the only President and CEO of the global IT solutions provider now recognized as the largest Minority & Woman-Owned Business Enterprise (MWBE) in the United States.

In addition to her responsibilities at SHI, Thai is Dean of the Advisory Board at Harvard University, a Life Trustee of Amherst College, and proud mom to two great kids!

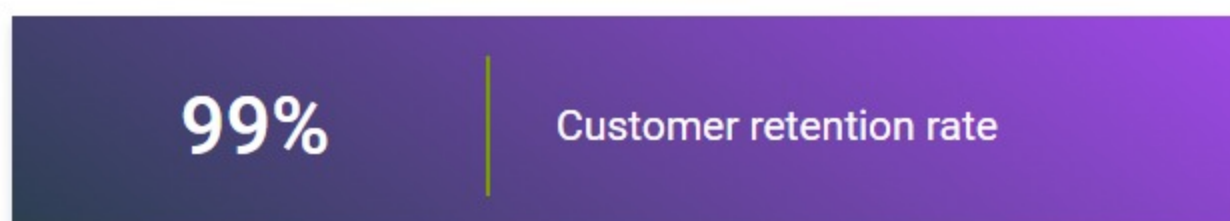
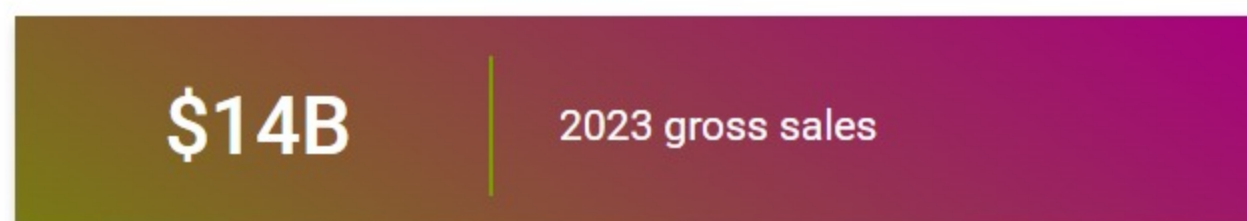
[Read more about Thai and the rest of the SHI Leadership Team](#)

## SHI at a glance

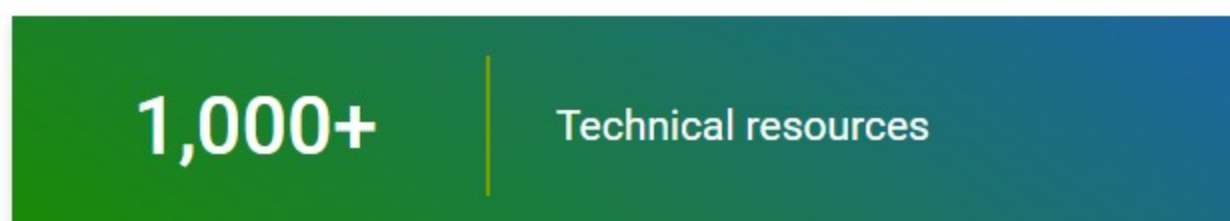
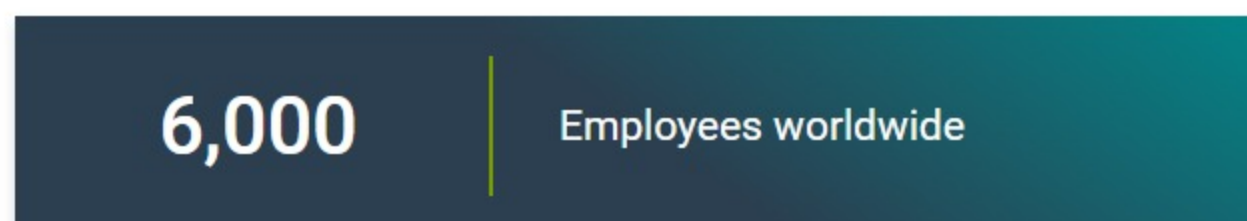
### Nationally certified as a woman-and minority-owned business



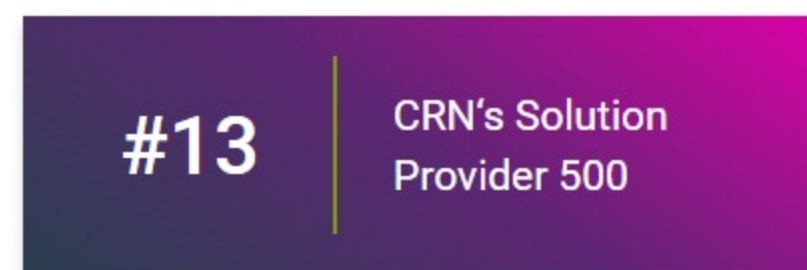
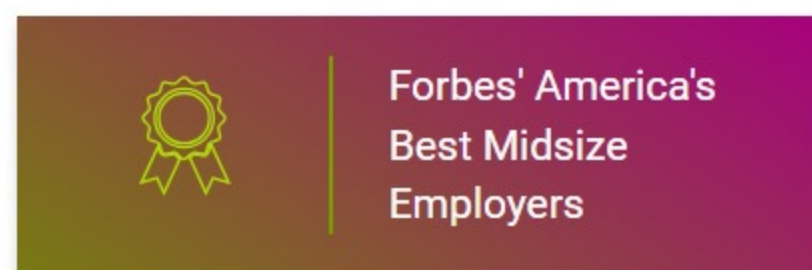
### Consistent growth since 1989



### Global presence throughout North America, EMEA, and Asia-Pac



### The partner you can rely on to be there for you, for good



## Your personal technology concierge

Relationships are the heartbeat of SHI. When you share your story, our team is listening, not selling. And then we build solutions tailored to your goals. When you're happy, we're happy.



### Making connections

We connect your team with the scalable IT solutions and services you need to securely support your organizational growth and employee experience.



### Beyond the contract

We have contracts and SLAs with our customers, of course. But we also emphasize going the extra mile to deliver exceptional value and ensure true success for your organization.



### Sweating the small stuff

We help you focus on what's most important by handling distractions. From managing long-tail vendors to arranging logistics to managing IT assets, we've got your back.

### About SHI

Stratascale  
Public Sector  
The SHI Hub  
News and Media  
Events  
Our Leadership  
Our Facilities and Locations  
Awards and Accolades  
Diversity and Inclusion  
Sustainability  
Careers  
Contact Us

### My Account

My Home  
Order Status  
Retrieve Quotes  
My SHI Account Team  
Update Newsletter Subscriptions  
English

### Solutions

SHI Executive Briefings  
IT Lifecycle Services  
Cybersecurity  
Data Center  
Cloud  
Digital Workplace  
Training and Adoption Services  
Customer Technology Centers  
Case Studies



Terms and Conditions  
Privacy  
Do Not Sell or Share My Personal Information  
ISO Compliance  
FAQ  
Accessibility Statement  
California Transparency in Supply Chains  
Transparency in Coverage Regulations (MRFs)