

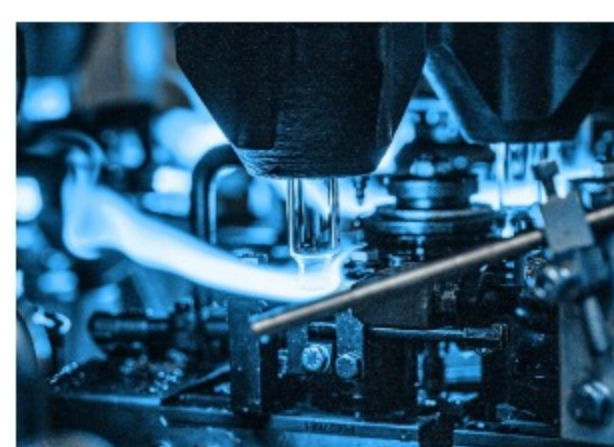
Pharmaceutical glass tubing primary packaging

Soffieria Bertolini Pharmaceutical Glass Manufacturer

✓ Since 1935 partnership with our customers is the most effective way to innovation



→ Glass tubing loader



→ Vials forming machine



→ Clean room automatic packing device

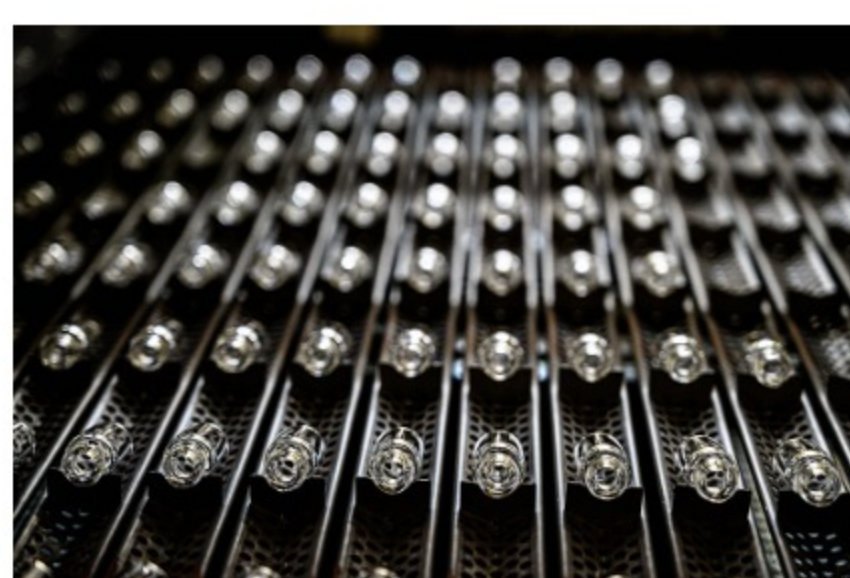


→ Ampoules transferring line

✓ HIGHEST QUALITY

We manufacture ampoules and vials with the highest standard quality in order to satisfy the most strict requirements of the pharmaceutical industry.

MARKETING CONCEPT →



→ Production line



→ Ampoules forming machine



AMPOULES

TECHNOLOGY →

One step ahead since...

Projector profile to detect vials and ampoules form and tooling optimization. All of our tools are designed in our technical dept, built by our tooling dept and checked by our QA personnels.

FORMING MACHINES

The best forming machines available on market are improved by SB technical dept.

VISION SYSTEMS

Camera vision systems to detect ampoules and vials dimensions, cosmetics and printing are SB know-how and in house developments.

LINES

The best lines available on market are improved by SB technical dept.

CLEAN ROOM ISO 8

Vials inspection and packing under clean room conditions (class C).

VIALS



300

MIO VIALS/YEAR

380

MIO AMPOULES/YEAR

34772

K € 2022
TURNOVER

28900

SQM TOTAL AREA
PLANT

CERTIFICATIONS →

Soffieria Bertolini has been registered on 01/03/07 by BSI against ISO 15378: GMP standard for design, manufacture and supply of Primary Packaging Materials to Pharmaceutical industries.

PROCESS VALIDATION →



ISO 9001



ISO 15378



ISO 45001



ISO 14001



WHISTLEBLOWING

DMF 14744 TYPE III FDA USA
DMF-2005-010 HEALTH CANADA
DMF B20190001816 NMPE CHINA

SOFFIERIA BERTOLINI S.p.A.

Via Sestriere, 7 10060 Candiolo (TO) Italy
Ph + 39 011 9622993
Fax + 39 011 9625516
info@soffierbertolini.it
VAT Number: IT00456600014
Capitale sociale 1.034.000 int. vers.
C.C.I.A.A. Torino 00456600014
REA 176465



SOFFIERIA BERTOLINI S.p.A.

HOME
COMPANY
AMPOULES
VIALS
TECHNOLOGY
R & D
QUALITY
CONTACT